



Test Dec 15
facts 6, 7, & 8

VOCABULARY

- ~~array~~
- product
- equal group
- ~~square number~~
- multiple

► Vocabulary

Choose the best word from the box.

1. A(n) array is an arrangement of objects in columns and rows. (Lesson 2-4)

2. A(n) sq. number is a product of a whole number and itself. (Lesson 2-6) sq. #

3. 80 is a(n) multiple of 10. (Lesson 2-12)

10, 20, 30, 40, 50, 60, 70, 80

► Concepts and Skills

4. Explain how to use the order of operations to find the answer to this expression. Then find the answer. (Lesson 2-10)

$$3 + 4 \times 5 = 23$$

X before +

$$4 \times 5 = 20 + 3 = 23$$

5. Describe how to use mental math to find 90×8 . (Lesson 2-12)

$9 \times 8 = 72$ then add the 0
720

Find the answer. (Lesson 2-10)

6. $(7 - 4) \times 5 = 15$ 3×5

7. $4 + 18 \div 3 = 10$ $4 + 6$

$6 \times 5 = 30$
 $6 \times 6 = 36$

$\frac{36}{6} = 6$

Multiply or divide.

(Lessons 2-1, 2-3, 2-5, 2-6, 2-7, 2-8, 2-12, 2-14)

8. $7 \times 8 = 56$

9. $6 \cdot 9 = 54$

10. $55 \div 1 = 55$

11. $72 \div 9 = 8$

12. $30 \times 0 = 0$

13. $49/7 = 7$

14. $4 \cdot 3 = 12$

15. $2 * 10 = 20$

16. $64 = 8 \times 8$



Review/Test

Multiply or divide.

(Lessons 2-1, 2-3, 2-5, 2-6, 2-7, 2-8, 2-12, 2-14)

17. $\boxed{8} \times 3 = 24$

18. $28 \div \boxed{7} = 4$

19. $3 \times 90 = \boxed{270}$

20. $\boxed{4} \overset{4}{6} \overline{)24}$

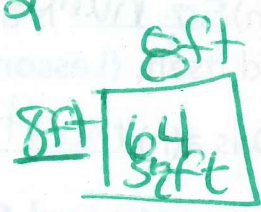
21. $\boxed{6} \overline{)42}$

$7 \times 5 = 35$
 $7 \times 6 = 42$

► Problem Solving

Write an equation and solve the problem.

(Lessons 2-2, 2-4, 2-7, 2-9, 2-10, 2-11, 2-13, 2-15)



22. The area of Keshawn's garden is 64 square feet. Its width is 8 feet. What is the length of this garden?

8 ft

23. Carrie found 7 seashells at the beach. Her brother found 8 seashells. They divided the seashells equally among 3 people. How many seashells did each person get?

$(7+8) \div 3 = 5$ $15 \div 3 =$

24. Mr. Alberto has 48 students to divide into teams of 8. The number of teams will be divided equally for three high school students to coach at practice. How many teams will each high school student get?

$48 \div 8 \div 3 = 2$ $\begin{matrix} M & 7 \\ L & 2 \end{matrix}$

25. **Extended Response** Marci has 7 bean bag dolls. Lucy has 2 bean bag dolls. Janice has twice the number of dolls as Marci and Lucy combined. How many dolls does Janice have? Explain the steps you used to solve the problem. Then write an equation to show the steps.

$(7+2) \times 2 = 18 \text{ dolls}$
 $9 \times 2 = 18$